



## Packing List

NAME	QTY.	REMARK
Transmitter	1	
ENGINE OPERATOR'S MANUAL	1	
AA LR6 Battery	3	

Yangzhou Weibang Garden Machine Company Limited  
Hanjiang Industrial Park  
Yangzhou, Jiangsu, P.R.CHINA

Tel: +86-514-87849959, +86-514-87849975 Fax: +86-514-87849938

Email questions and comments to:

[Sale@weibang.com](mailto:Sale@weibang.com)

Visit our website:

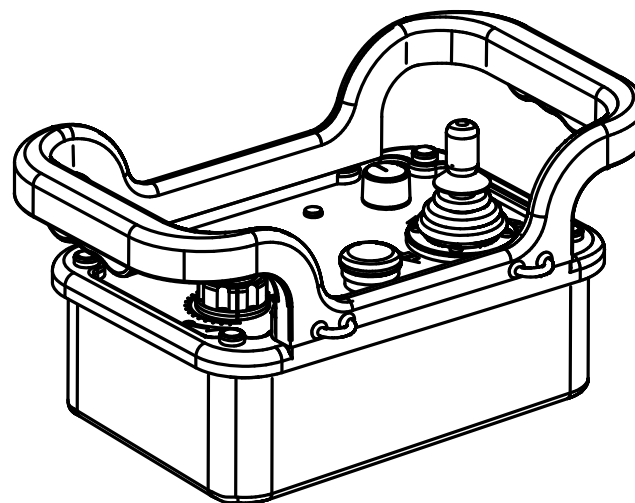
[www.weibang.com](http://www.weibang.com)



M2601010

# 2.4G RC Transmitter

Model Numbers:  
GTRC24



**Operator's manual**  
(Original instruction)



This transmitter is used in conjunction with flail mower of WBGT6813-TE, WBGT8013-TE.

This manual describes the 2.4G Remote control transmitter and its mowing operation in RC mode and relative safety instructions. For more safety rules, refer to Flail mower's operating Manual.

**WARNING! This RC transmitter produces an electromagnetic field during operation. This field may under some circumstances interfere with active or passive medical implants. To reduce the risk of serious or fatal injury, we recommend persons with medical implants to consult their physician and the medical implant manufacturer before operating this machine.**

Persons have pacemaker must not touch live parts of ignition system when the engine is running.



### **Remote Control Operation of Flail Mower**

We recommend working in remote control mode for example

- If you get away from farm, corporal strain. Vibrations, exhaust gases, dust. To protect the sun and rain.
- In inaccessible places such as branches or thorns lying deep under the thicket.
- On the slope.
- To better monitor the danger area and thus avoid accidents
- At the edge of the water or near edges with a risk of falling.
- On yielding, delicate soil.
- To stay away from insects or pollen.

### **OPERATOR TRAINING**

- All machine operators and maintenance personnel must read this entire manual thoroughly and carefully and follow the instructions provided.
- It is the duty of the employer to ensure that operators possess the skills required to operate the machine and that they have read this manual carefully.
- Radio-controlled flail mower are not toys but a PROFESSIONAL MACHINE. Always respect the

conditions of use specified by the producers of the machine. Radio-controlled flail mower is generally used during daylight hours and on slopes can have a maximum inclination of 33°.

- The operator must not be someone who works occasionally on this machine. The machine must be used exclusively by qualified personnel, who must be familiar with the location and function of all controls, tools, indicators, indicator lights and the various safety plates. The who operator control the machine via radio must have accumulated a certain experience with this type of machine, therefore skilled and trained.

- Whenever direct visibility of the work zone from the control station is not sufficient, the operator must be assisted by a specifically assigned person.

- Before leaving the machine unattended, proceed as follows:

1. Park the machine on a flat surface.

2. Reduce the rpm of the engine before turning it off. Press the remote control red button and turn the ignition key to the "O" position.

3. Remove the ignition key and take the remote control away with you.

- Keep the remote control out of the reach of unauthorised personnel and especially children.

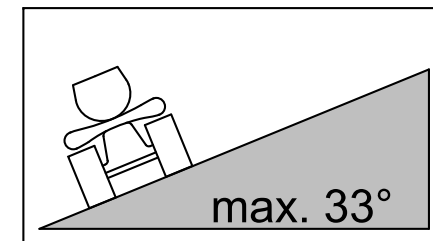
- Continually make sure that there are no people in the machine danger area (they must stay more than 100 m away). Shout an alert, sound your horn to warn people and stop work if these people do not leave the danger area.

**WARNING: Tall grass can hide obstacles such as big stones or animals and even humans. For safety mowing operation in RC mode, users are recommended to mow grass whose height less than 30cm and follow behind the unit and keep a safety clearence at least 15m and no more than 20m.**

### **Slope suitability in RC operation**

-Use the unit in remote control mode RO) only up to a slope of 33.

If you drive across the slope with more than 33-inclination, an intermittent horn sounds on the device. Then head for flatter terrain.



## Hazard area additionally in RC operation

Wrong or unintentional steering or driving movements can lead to dangerous situations. People or obstacles may be rammed or driven over. The device may tip or slip. First, familiarize yourself with the device in MC mode. Then train the RC operation before working with it.

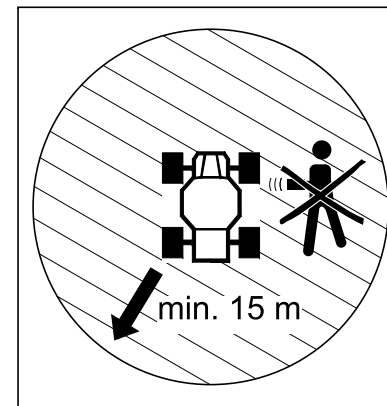
Hazard area for the operator when the knife is disconnected

- Within a 5-meter radius of the device.

Hazard area for the operator while the knife is running

- Within 15 meters around the device
- Particularly dangerous is the area in front and right of the device.

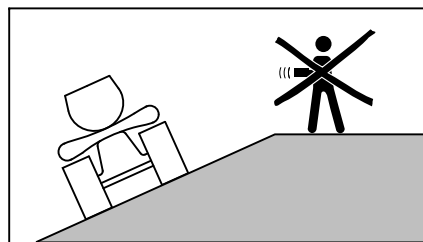
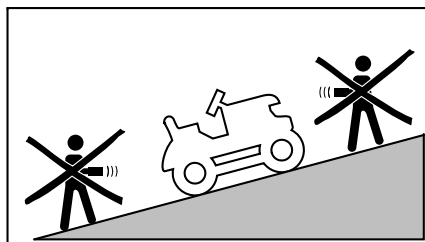
**For more safety rules, refer to safety precautions of Flail mower's operating Manual.**



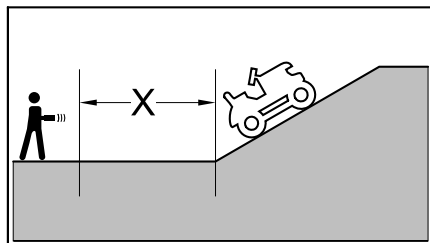
## Additional danger area on the slope

Below the unit

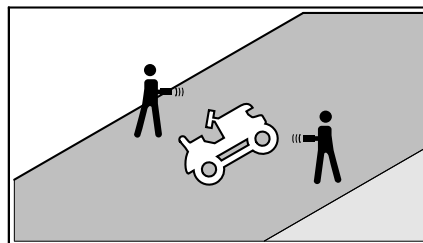
Above the machine



## Recommended position for the operator on the slope



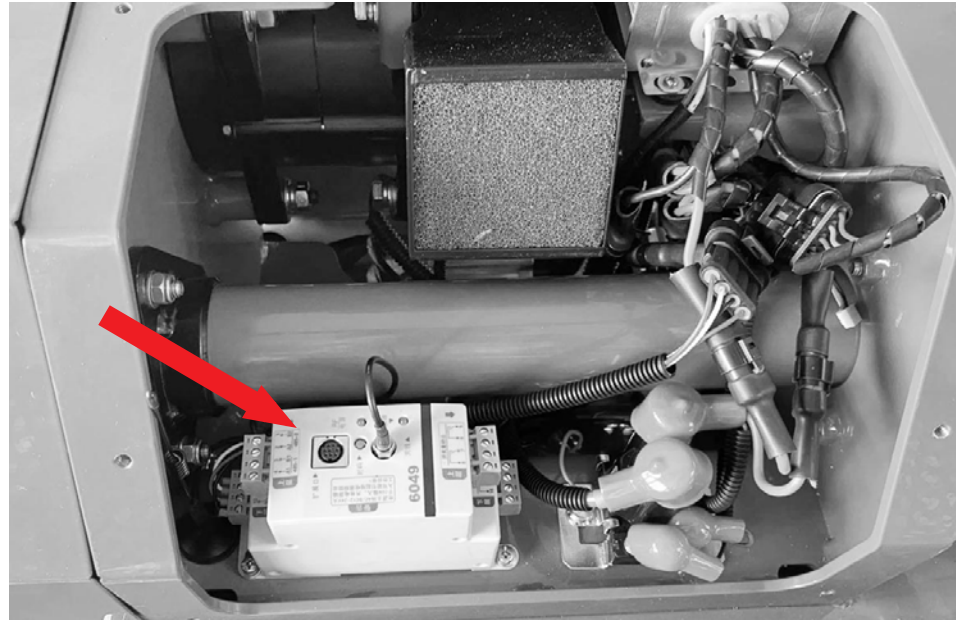
X=Hazard area



Outside the danger zone  
to the side of the appliance

## RECEIVER UNIT

The radio receiver unit is located in the front right-hand side section where all the control units are positioned.

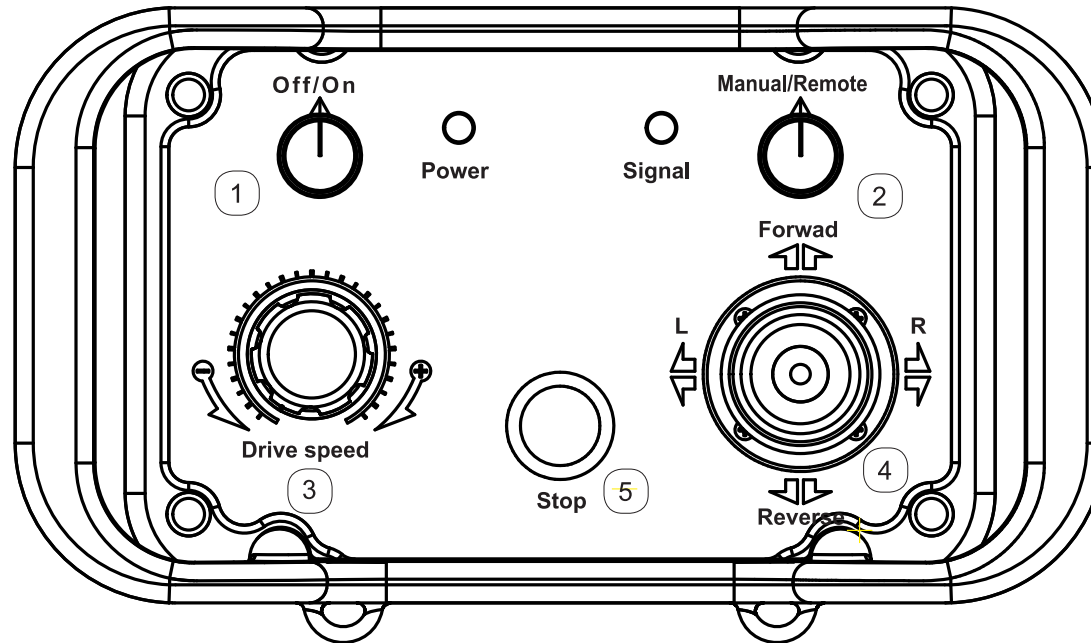


### CAUTION:

**If you wish to clean the machine with a pressure washer, do not direct the jet towards the radio receiver unit.**

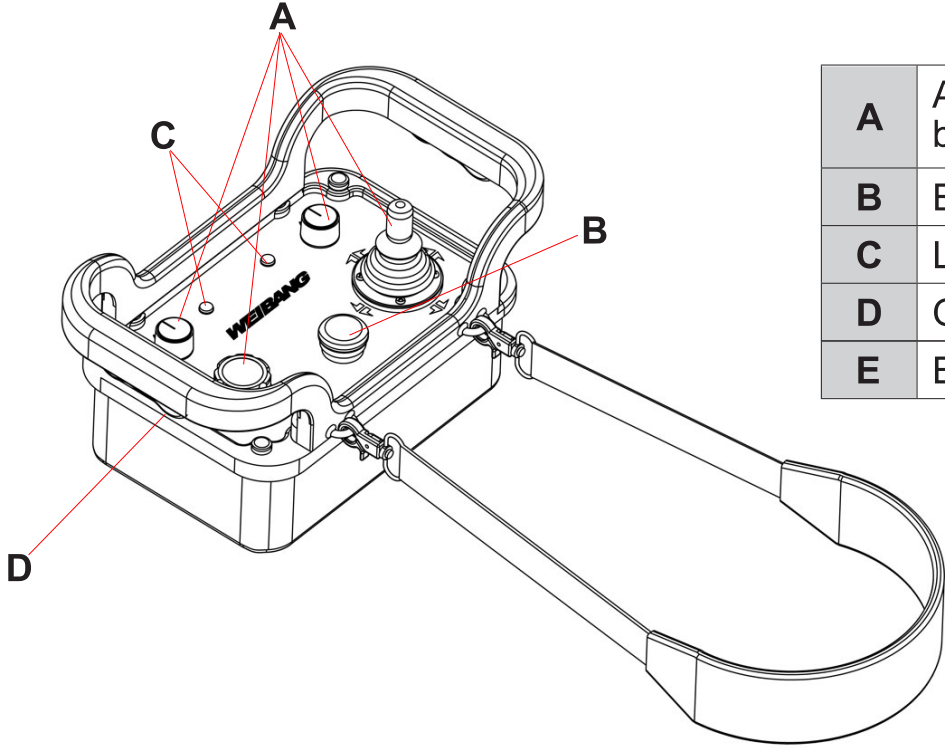
**Cover it with a plastic bag as a precaution.**

# REMOTE CONTROL

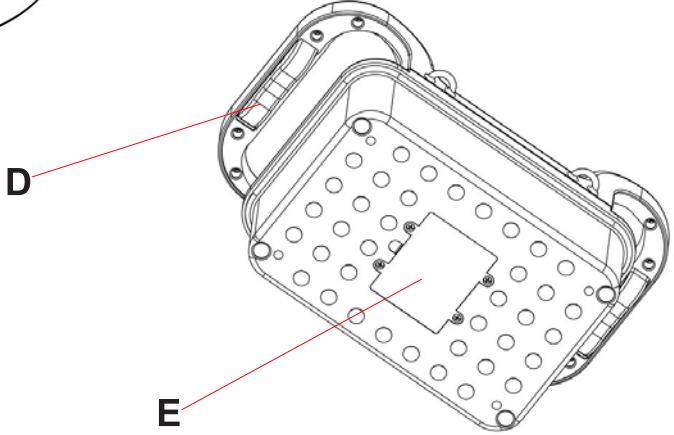


REMOTE CONTROL FUNCTIONS	
1	Transmitter power switch
2	Manual / Remote shifting switch
3	Ground speed regulation potentiometer
4	Forward movement/ backward movement / Steering joystick
5	Emergency button

# REMOTE CONTROL DESCRIPTION



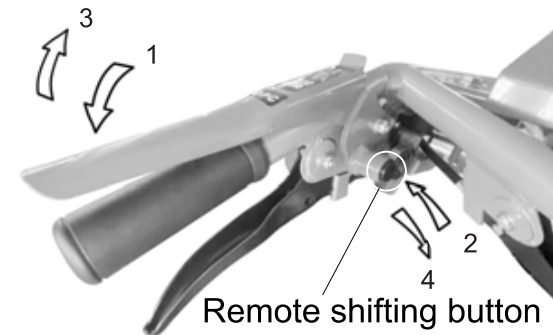
<b>A</b>	Actuators (joystick, selector switches, buttons)
<b>B</b>	Emergency Stop Button
<b>C</b>	LED light
<b>D</b>	Operator presence control (OPC) button
<b>E</b>	Battery cabin





# Shifting Flail mower to remote control mode

- Shift the driving speed lever back to neutral(stop).
- Press down OPC lever and keep holding it together with handlebar with left hand firstly, and then push the remote shifting button in with a finger of right hand.
- Keep pressing the remote shifting button and then release the OPC lever slowly, now the remote shifting button will locked and the unit enter a remote mode. Users can operate the machine via a transmitter.



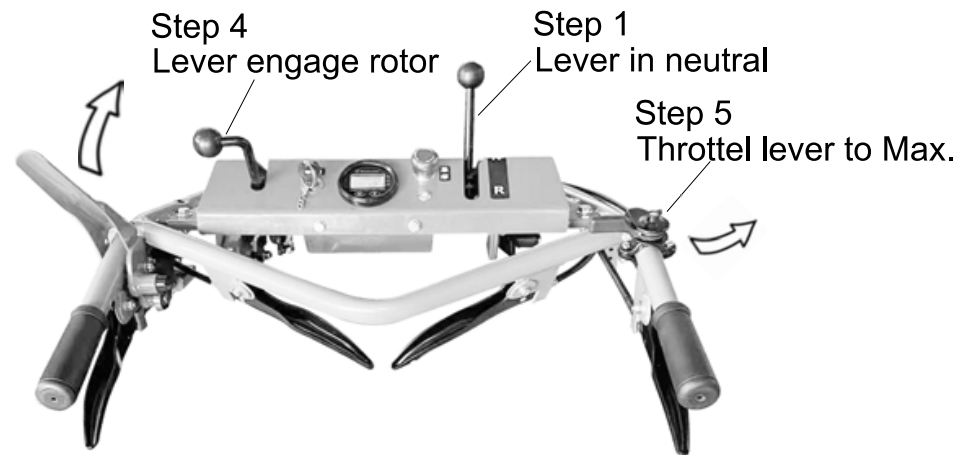
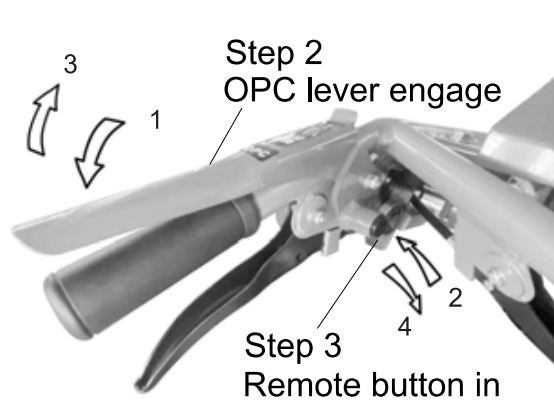
- Press the OPC lever again will release the remote shifting button automatically.

## Remote Mowing

**WARNING: Tall grass can hide obstacles such as big stones or animals and even humans. For safety mowing operation in RC mode, users are recommended to mow grass whose height less than 30cm and follow behind the unit and keep a safety clearance at least 15m and no more than 20m.**

## Flail mower

- Start the flail mower's engine as described in "Starting the engine"
- Wear individual protective ear plugs and solid shoes.
- Make sure or shift the driving speed lever in Neutral.

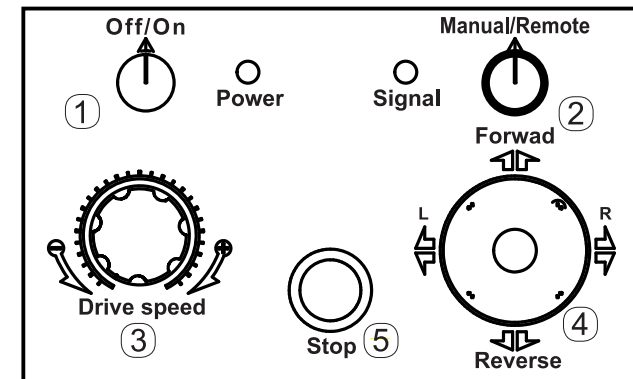


## Transmitter

- Set Drive speed regulation potentiometer ③ to min.
- Shift the Manual / Remote shifting switch ② to Remote.
- Make sure Emergency button ⑤ unlocked.
- Pairing codes with receiver:

Turned on the transmitter and wait for 3 seconds, if the transmitter and receiver are paired successfully, the right LED light flashes at a 0.5-second interval and repeating 3 times in the next 3 seconds, which indicating that the code pairing is successfully.

- Press down OPC lever and keep holding it together with handlebar with left hand firstly, and then press remote shifting button in to shift to remote mode.(See "Shifting to remote mode")
- Push rotor clutch lever forward to the end of stroke until the lever locked and the rotor run.
- Set and ensure the throttle lever to Max. speed.



- Shift the Transmitter power switch ① to ON.
- Press in the transmitter OPC button(or lever) on bottom of both handlebars, and then move joystick ④ on desire for forward movement/ backward movement / Steering.
- Set Ground speed regulation potentiometer③to desired speed, now you can remote control the unit for mowing.

## End Remote Mowing

### Transmitter

- Set Ground speed regulation potentiometer ③ to min. speed.
- Shift the Transmitter power switch ① to OFF.

### Flail mower

- Set the the throttle lever to min. speed.
- Press down and then release the OPC lever to reset all control levers and stop the mower.
- Turn the engine switch off to stop the engine.
- Turn the key switch to OFF to stop engine and whole machine.

### Specification:

Product Name: 2.4G Remote Control Transmitter

Model: GTRC24

Input: DC4.5V / 50mA / 22.5mW

Transmit Power: 1.6-10mW

Antenna gain: 1.2dBi

# EC DECLARATION OF CONFORMITY

Business name of the manufacturer: **Yangzhou Weibang Garden Machine Company Limited**  
full address of the manufacturer: **Hanjiang Industrial Park, Yangzhou City,  
Jiangsu Province 225127, P. R. China**

name and address of the person (established in the Community) compiled the technical file:  
**Cristoph Meyer, Bochstraße 1, D23569 Lubeck ,Germany**

We declaring that the apparatus:

product name: **2.4G Remote Control Transmitter**

function: **Service for machines of agriculture and forestry**

model: GTRC24

type: **DC Battery powered**

serial no.:

fulfils all the relevant provisions of Directives:

**2014/53/EU**

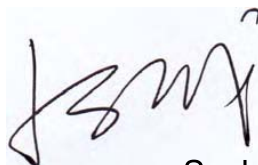
and tested in accordance with below standards:

ETSI EN301489-1 V2.2.3 (2019-11); ETSI EN301489-3 V2.3.2 (2023-01);

EN IEC62368-1:2020+A11:2020; EN50663:2017; EN62479:2010; ETSI EN300440 V2.2.1 (2018-07);

place and date of the declaration: **Jiangsu 2023-12-28**

signature of the person:



Sucheng Ju (General Manager)

**ETSI EN 301 489-1 V2.2.3 (2019-11)**  
**ETSI EN 301 489-3 V2.3.2 (2023-01)**  
IEC 62368-1:2018  
EN IEC 62368-1:2020+A11:2020  
**EN 50663: 2017; EN 62479: 2010**  
**ETSI EN 300 440 V2.2.1 (2018-07)**